


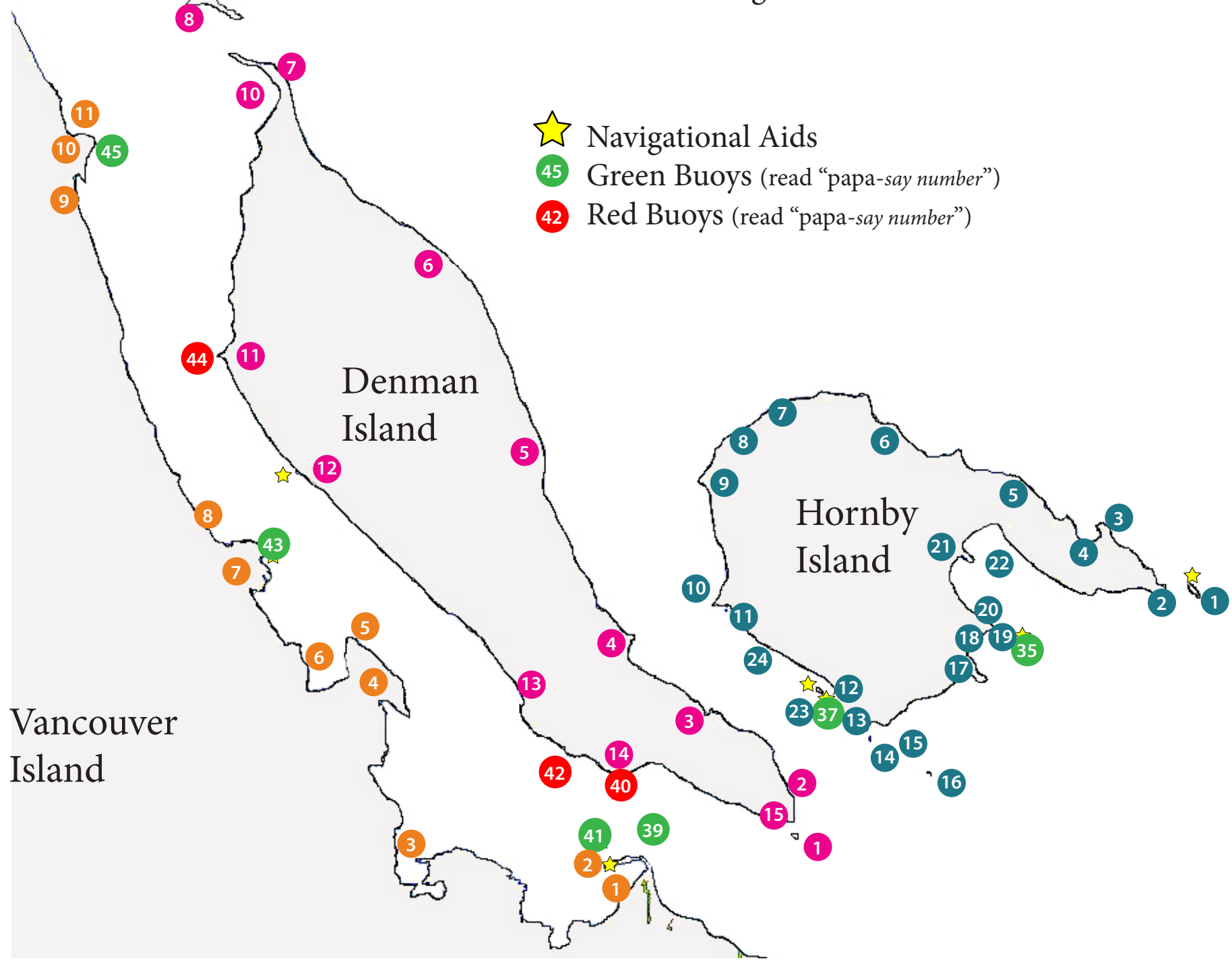


# RCM-SAR 59 Landmarks

This chart is not to be used for navigation!



-  Navigational Aids
-  Green Buoys (read "papa-say number")
-  Red Buoys (read "papa-say number")



# Landmark Names

(match to chart above)

## Vancouver Island

1. Deep Bay
2. Mapleguard Point
3. Mud Bay
4. Ships Point Peninsula
5. Ships Point
6. Fanny Bay
7. Base Flat
8. Buckley Bay
9. Union Bay
10. Union Point
11. Log Sort

## Denman Island

1. Chrome Island
2. Eagle Rock
3. Gravelly Bay (Ferry Terminal)
4. Whalebone Point
5. Fillongley Prov. Park
6. Komas Bluff
7. Longbeak Point
8. Sandy Is. Marine Prov. Park
9. Seal Islets
10. Henry Bay
11. Denman Point
12. Denman Ferry Terminal
13. Metcalf Bay
14. Repulse Point
15. Boyle Point Prov. Park

## Hornby Island

1. Flora Islet
2. St. John Point (Helliwell Park)
3. Cape Gurney
4. Whaling Station Bay
5. Tralee Point
6. Shields Point
7. Collishaw Point
8. Manning Point
9. Phipps Point
10. Shingle Spit
11. Ferry Terminal
12. Ford's Cove
13. Norman Point
14. Toby Is.
15. Heron Rocks
16. Norris Rocks
17. Downes Point
18. Sandpiper Beach
19. Nash Bank
20. Dunlop Point
21. Spray Point
22. Tribune Bay
23. Maude Reef
24. Mount Geoffery Escarpment